

BIZINSIGHT DESKTOP EDITION WITH INTACCT  
CONTENT 1.0.1

# Release Notes

**BizInsight Desktop Edition with Intacct Content**  
**Build 1.0.1**  
**4/15/2015**

# Table of Contents

- Bizinsight Desktop Edition With Intacct Content 1.0.1 Release Notes ..... 1
- 1. BizInsight Desktop Edition – System Requirements ..... 4
  - 1.1. Client Supported OS..... 4
  - 1.2. Server Supported OS (Administration elevation required)..... 4
  - 1.3. Microsoft Office Excel versions supported ..... 4
  - 1.4. A note on performance..... 4
- 2. Changes Specific to BizInsight DE with Intacct Content..... 5
  - 2.1. Available Data Sources..... 5
  - 2.2. New Functions ..... 5
  - 2.3. Excel Ribbon Differences ..... 5
  - 2.4. Known Issues with BizInsight DE with Intacct Content..... 5
- 3. Intacct Function Map ..... 6
- 4. BizInsight Desktop Edition – New Features ..... 6
  - 4.1. Right-click menu on Lists..... 6
  - 4.2. New Excel Ribbon..... 6
- 5. BizInsight Desktop Edition – Enhancements..... 10
  - 5.1. Refreshable Lists ..... 10
  - 5.2. Cell Values & Cell References can now both be used in a single BizSuperFunc ..... 10
  - 5.3. BizInsight Query - User experience..... 10
  - 5.4. Check for Errors option when selecting data..... 11
  - 5.5. Behavior with multiple workbooks open..... 11
  - 5.6. Windows 8.1 user experience..... 11
- 6. BizInsight Desktop Edition – Bug Fixes..... 12
  - 6.1. Data Selection ..... 12
  - 6.2. BizInsight Query - User experience..... 12
  - 6.3. Drilldown feature ..... 12
  - 6.4. Unwanted workbook recalculation..... 12
  - 6.5. Behavior with multiple workbooks open..... 12
  - 6.6. Windows 8.1 user experience..... 12
  - 6.7. Lingering hourglass bug ..... 12
- 7. BizInsight Desktop Edition– Known Issues..... 13
  - 7.1. Refreshable Pivot Tables..... 13
  - 7.2. Lists built with previous versions of the product..... 13
  - 7.3. Selecting Data - Headers..... 13

7.4.	Selecting Data – selecting a BizInsight Analysis Set .....	13
7.5.	Use with BizInsight (enterprise edition) Analysis Sets .....	13
7.6.	A note on Lists.....	13
7.7.	Menu sizes in certain environments.....	13
7.8.	Native Excel functions and BizSuperFuncs in the same cell .....	13
7.9.	Parameters that reference a cell .....	13
7.10.	Check for Update button .....	13
7.11.	Actions that require data to be reselected .....	13
7.12.	Use of formula modifiers in cells containing a BizSuperFunc .....	14
7.13.	Use of data that contains blank cells .....	14
7.14.	Lotus syntax .....	14
8.	BizInsight Desktop Edition – Best Practices .....	15
8.1.	Using selected Excel Data .....	15
8.2.	Use of Named Ranges or cell ranges vs. Tables when selecting data.....	15

# 1. BizInsight Desktop Edition – System Requirements

## 1.1. Client Supported OS

- Windows 7 (32-bit & 64-bit)
- Windows 8 (32-bit & 64-bit)
- Windows 8.1 (32-bit & 64-bit)

## 1.2. Server Supported OS (Administration elevation required)

- Windows Server 2008 R2 SP2 or later (32-bit & 64-bit)
- Windows Server 2008 R2 SP2 or later (32-bit & 64-bit)
- Windows Server 2012 (64-bit)
- Windows Server 2012 R2 (64-bit)

## 1.3. Microsoft Office Excel versions supported

- 2010 Office (32-bit & 64-bit)
- 2013 Office On Premise (32-bit & 64-bit)
- 2013 Office 365 Click to Run (32-bit & 64-bit)

## 1.4. A note on performance

- Users of 64-bit versions of Excel will be able to use larger amounts than Excel's 32-bit counterpart. Excel bitness and available RAM are the two largest factors in performance. For best results, 64-bit Excel and 8 GB RAM minimum is recommended.

## 2. Changes Specific to BizInsight DE with Intacct Content

### 2.1. Available Data Sources

The total count of available data sources has been updated from 67 to 83 to include requests that allowed for filtering by multiple dimensions.

### 2.2. New Functions

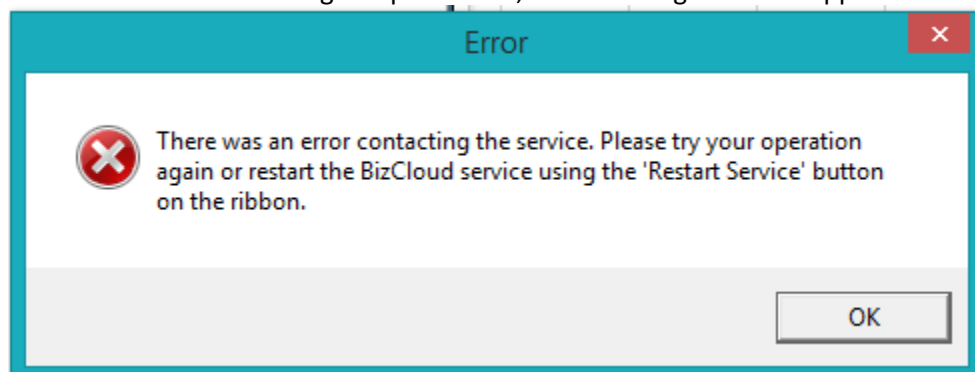
There are new functions “PERBAL, ENDBAL, BEGBAL” and “BUDBAL” that interrogate the “GL Entries” and “GL Budget Detail” respectively. These should replace the use of MTD and YTD functions, although those are still available. This is because Intacct does not expose a company calendar, and instead encourages creation of user defined “Reporting Periods”. The period balance functions require a “Reporting Period” as a parameter. The “Aggregate Column” parameter has been removed from ENDBAL and BEGBAL, as it is implied. BUDBAL requires a “BudgetID”.

### 2.3. Excel Ribbon Differences

The new build includes BizInsight Desktop Edition Version 1.2.3.0 and BizInsight Version 7.0.0.0. This specific build removes licensing from BizInsight Desktop Edition. There is no Check For Updates or Buy it Now option.

### 2.4. Known Issues with BizInsight DE with Intacct Content

- 2.4.1.** When dragging and dropping a BizInsight Query, suggested parameter fields are automatically populated. The list of available values to populate parameter fields comes from other data sources and additional API calls. If the user has no permission, or there is no data for a given parameter, the following error will appear.



Manually created parameters can trigger this same error. Removing the parameter allows continued functionality of the product. This error does not require a restart of the service. It merely indicates insufficient data or permissions for the value represented by the filter.

- 2.4.2. Passing parameter values that return no data will return an error.**

This can happen if there is no data for the query specified, or if a parameter is passed in a way that it doesn't match the underlying data.

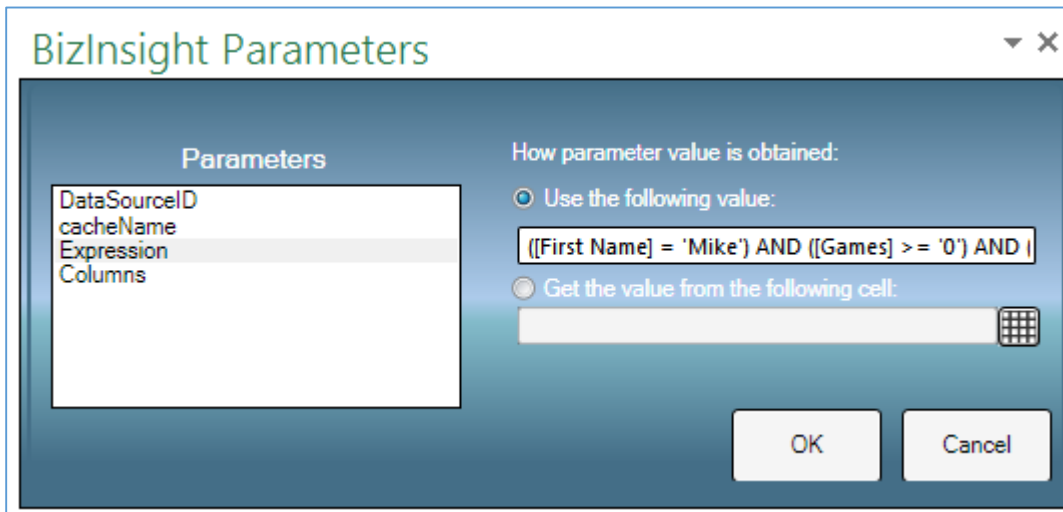
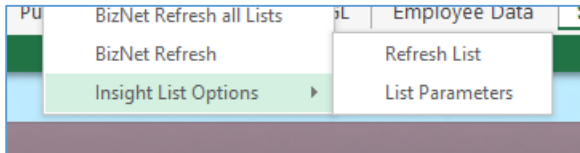
### 3. Intacct Function Map

Function	DataSource Name	DrillDown	DrillDown Datasource	Required Parameters	Dimensions Available	Entity Behavior	Version
PERBAL	GL Account Balances	Yes	GL Entries	Reporting Period	All	Null returns all locations	Intacct 1.0.1.0
ENDBAL	GL Account Balances	Yes	GL Entries	Reporting Period	All	Null returns all locations	Intacct 1.0.1.0
BEBBAL	GL Account Balances	Yes	GL Entries	Reporting Period	All	Null returns all locations	Intacct 1.0.1.0
BUDBAL	GL Budget Detail	Yes	GL Budget Detail	Budget ID	All	Null returns all locations	Intacct 1.0.1.0
MTDCR	GL Transactions	Yes	GL Transactions	Fiscal Year, Fiscal Period	Location, Department, Account No	Null returns ONLY parent location	Intacct 1.0.1.0
MTDDB	GL Transactions	Yes	GL Transactions	Fiscal Year, Fiscal Period	Location, Department, Account No	Null returns ONLY parent location	Intacct 1.0.1.0
MTDNET	GL Transactions	Yes	GL Transactions	Fiscal Year, Fiscal Period	Location, Department, Account No	Null returns ONLY parent location	Intacct 1.0.1.0
YTDNET	GL Transactions	Yes	GL Transactions	Fiscal Year, Fiscal Period	Location, Department, Account No	Null returns ONLY parent location	Intacct 1.0.1.0
YTDCR	GL Transactions	Yes	GL Transactions	Fiscal Year, Fiscal Period	Location, Department, Account No	Null returns ONLY parent location	Intacct 1.0.1.0
YTDDB	GL Transactions	Yes	GL Transactions	Fiscal Year, Fiscal Period	Location, Department, Account No	Null returns ONLY parent location	Intacct 1.0.1.0
GL Account Description	GL Accounts	No	N/A	GL Acct No	None	N/A	Intacct 1.0.1.0
Location Description	Location	No	N/A	Location ID	None	N/A	Intacct 1.0.1.0
Dept Description	Department	No	N/A	Department ID	None	N/A	Intacct 1.0.1.0

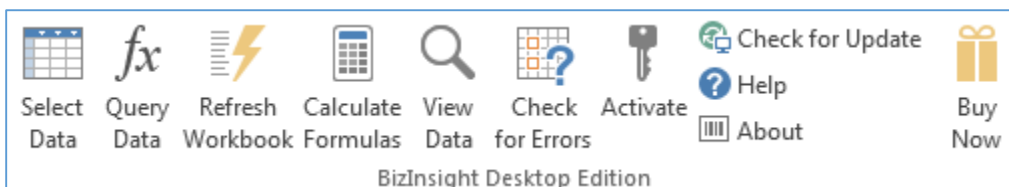
### 4. BizInsight Desktop Edition – New Features

#### 4.1. Right-click menu on Lists

Users may now edit parameters applied to an existing List by right clicking inside the List and selecting “Insight List Options” and then “List Parameters”.

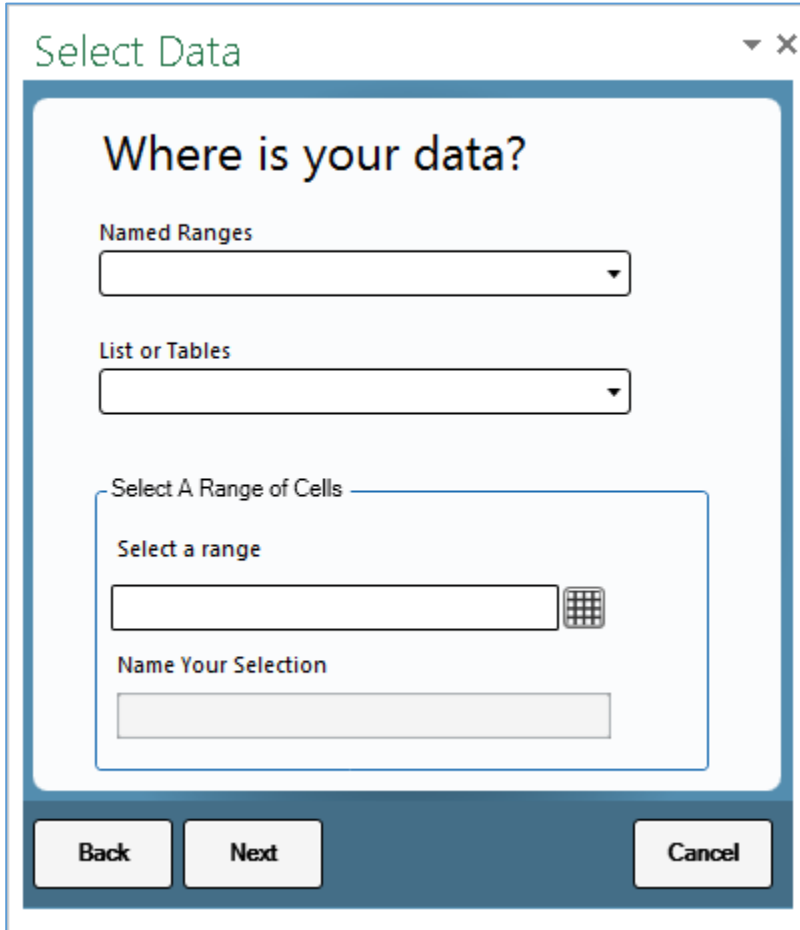


#### 4.2. New Excel Ribbon





**Select Data** – There are 3 ways to select data with which to build your BizSuperFuncs or Lists: Named Ranges, Lists/Tables, or by selecting a range of cell addresses.



**Query Data** – this was previously labeled “Formula Editor”. This is the interface used to create BizSuperFuncs or Lists.

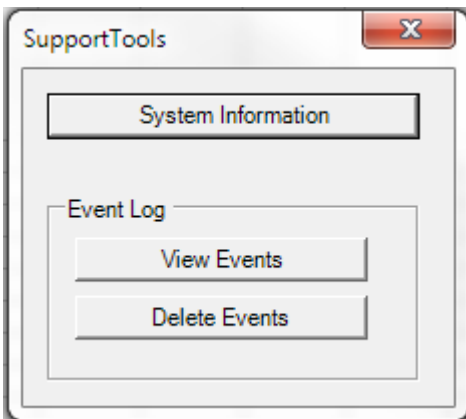
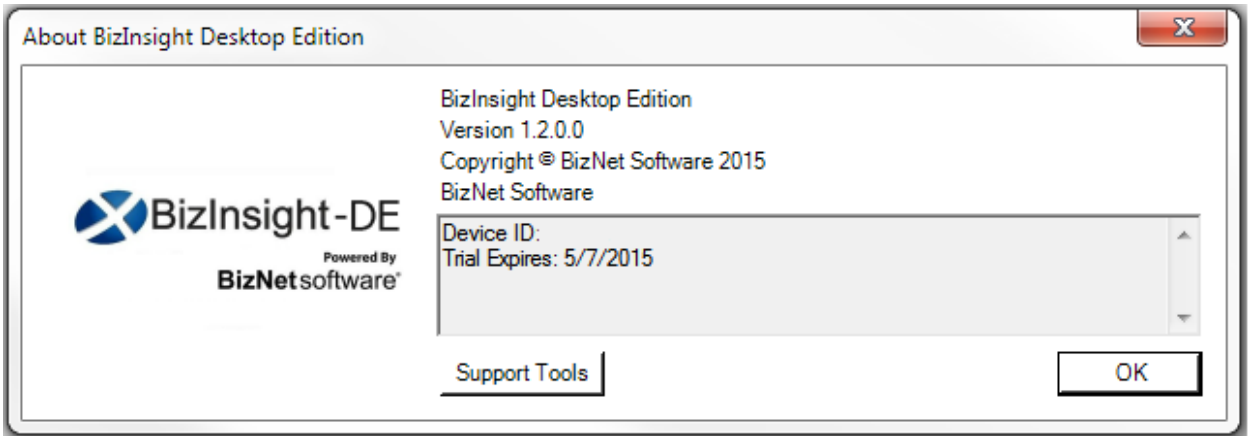
**Refresh Workbook** – this button initializes a full workbook refresh, which includes a resyncing of selected data and recalculation of all BizInsight and native Excel formulas. Depending on the size of your workbook, this could take a significant amount of time.

**Calculate Formulas** – if you know your underlying data has not changed, you can save time by using this button instead of the Refresh Workbook button. The Calculate Formulas button recalculates all formulas existing in the workbook without performing a resync of the data.

**Help** – this directs you to the BizNet product support page.

**About** – clicking on this opens a new window that contains a Support tools button, in addition to standard product information such as version and license status. The Support tools popup contains buttons that provide Operating System information and an Event Log.





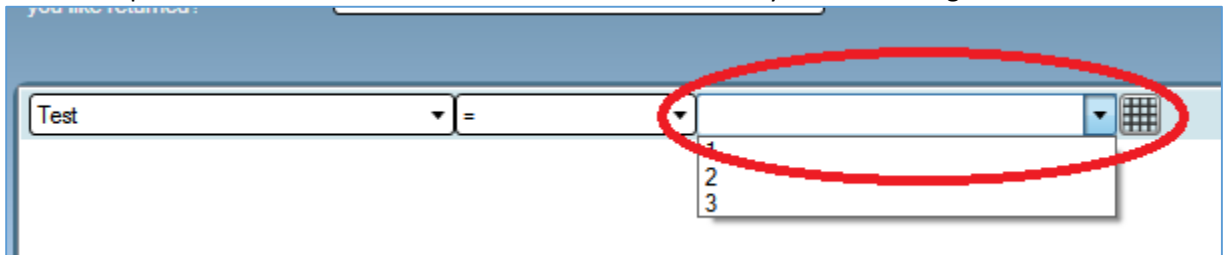
## 5. BizInsight Desktop Edition – Enhancements

### 5.1. Refreshable Lists

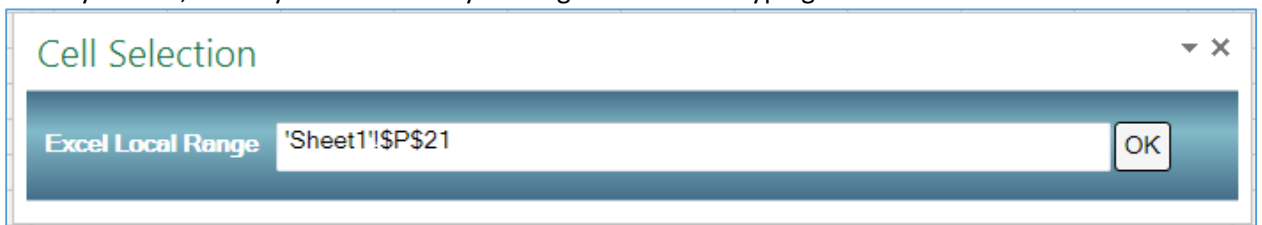
Improved reliability when refreshing lists in the workbook.

### 5.2. Cell Values & Cell References can now both be used in a single BizSuperFunc

Previously users had to select either Cell Values mode or Cell References mode when creating a BizSuperFunc, meaning that all parameters applied to the function were required to use a literal value or a cell address that contained a value. Now cell values and cell address references can both be used in the same function. To use a literal value, you may either type the literal value into the parameter level or you may click the down arrow on a parameter and select your value from a dropdown list of all available values found in the column you are working with:



Or to use a cell reference, click the grid button  and a window will pop up prompting you to select your cell, which you can select by clicking on the cell or typing the cell address:

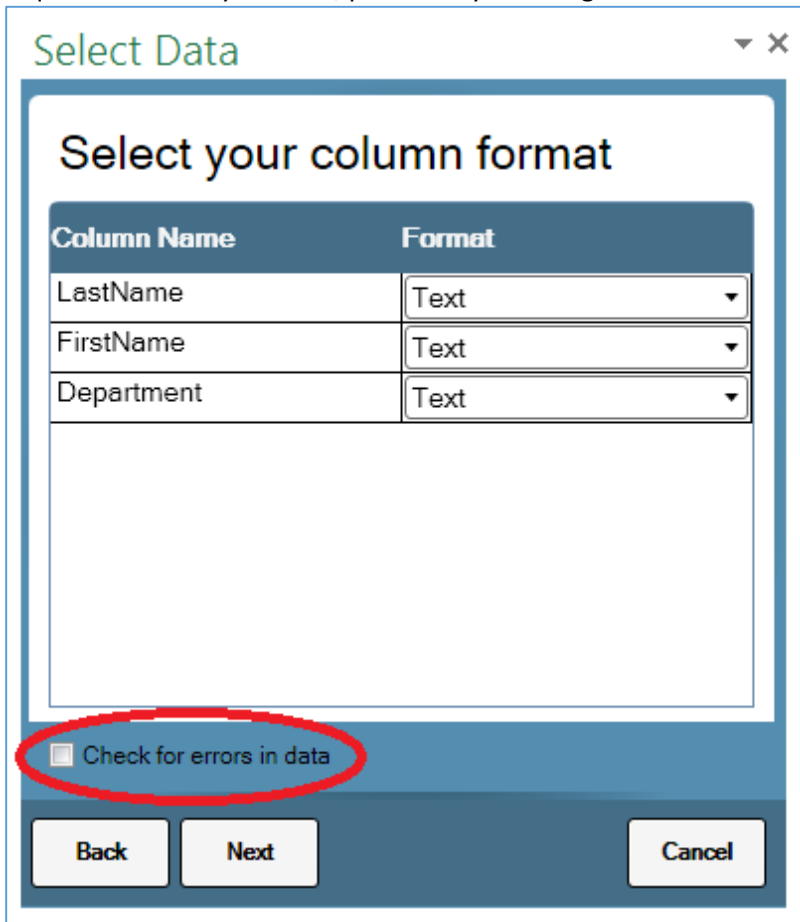


### 5.3. BizInsight Query - User experience

1. Dropdown menus in BizInsight Query expanded to support data sources with a large number of available columns
2. Expanded the available operators dropdown to display all available operators without scroll bar

#### 5.4. Check for Errors option when selecting data

Added a checkbox to enable error-checking in underlying data when selecting data. Previously the error check ran automatically. Now the default setting bypasses this check. If you are confident your data does not contain errors, keeping this unchecked will minimize the time required to select your data, particularly with large sets of data.



The screenshot shows a dialog box titled "Select Data" with a close button (X) in the top right corner. The main heading is "Select your column format". Below this is a table with two columns: "Column Name" and "Format".

Column Name	Format
LastName	Text
FirstName	Text
Department	Text

Below the table is a large empty rectangular area. At the bottom of the dialog, there is a checkbox labeled "Check for errors in data", which is circled in red. Below the checkbox are three buttons: "Back", "Next", and "Cancel".

#### 5.5. Behavior with multiple workbooks open

Improved performance and stability with multiple Excel workbooks open.

#### 5.6. Windows 8.1 user experience

Re-sized some of the menus and pop ups for Windows 8 environments

## 6. BizInsight Desktop Edition – Bug Fixes

### 6.1. Data Selection

1. Fixed several bugs that caused errors for some users when selecting data
2. Fixed bugs that caused some users to be required to re-select their data sets upon re-opening a workbook.

### 6.2. BizInsight Query - User experience

1. Fixed bug with cell referencing on a parameter that was forcing the user to click out of the referenced cell and then back into it in order for the BizInsight Query to grab the cell address.
2. Fixed several bugs that hindered stability of the BizInsight Query for some users
3. Fixed bug that was causing scrollbars on dropdown menus to collapse before a value was selected.
4. Fixed bug that prevented users from manually typing literal values into parameter levels
5. Fixed bug that disabled scroll wheel in multiple scenarios

### 6.3. Drilldown feature

Fixed bugs that disabled drilldowns in some circumstances

### 6.4. Unwanted workbook recalculation

Fixed bug that sometimes initialized unwanted full workbook re-calculations

### 6.5. Behavior with multiple workbooks open

Eliminated a delay that occurred when switching between workbooks in a session

### 6.6. Windows 8.1 user experience

Re-sized some of the menus and pop ups for Windows 8 environments

### 6.7. Lingering hourglass bug

Fixed bug that caused hourglass icon to linger upon opening a workbook

## 7. BizInsight Desktop Edition– Known Issues

### 7.1. Refreshable Pivot Tables

Refreshable pivot tables are not yet available.

### 7.2. Lists built with previous versions of the product

Any lists built with previous versions of the product will need to be rebuilt with this version in order to become refreshable.

### 7.3. Selecting Data - Headers

Headers are required for any data that is selected.

### 7.4. Selecting Data – selecting a BizInsight Analysis Set

Users must be on the same worksheet as their BizInsight Analysis Set in order to select it using the Select Data button on the BizInsight Desktop Edition ribbon.

### 7.5. Use with BizInsight (enterprise edition) Analysis Sets

In order to refresh BizInsight (enterprise) Analysis Sets via Desktop Edition refresh, it is required to first load the enterprise portion.

### 7.6. A note on Lists

Lists created (via the Query interface or from drilling down on a BizSuperFunc) will automatically create a named range scoped to the worksheet on which they exist. If the worksheet is deleted prior to the Named Range being deleted in the Excel Name Manager, the Named Range will continue to display in the Select Data dropdown in the Named Ranges section.

### 7.7. Menu sizes in certain environments

In some tablet environments, or desktop environments that have text magnifier enabled (a display setting in Control Panel), menus are not ideally sized and may have to be expanded to display all their buttons. Once a user resizes a window, size selection will be preserved the next time the product is used.

### 7.8. Native Excel functions and BizSuperFuncs in the same cell

The use of native Excel functions with BizSuperFuncs in the same cell is not supported.

### 7.9. Parameters that reference a cell

Parameter levels that reference a cell to obtain a value may not be altered to use a literal value. A new parameter level must be created, at which point a value may be selected from the dropdown menu or typed in manually.

### 7.10. Check for Update button

Some users have reported errors when using this button. The errors that we are aware of have been related to firewall/security settings.

### 7.11. Actions that require data to be reselected

If you edit a column header of a selected data set or wish to insert a new column of data, you will be required to re-select the data set to begin building functions or lists against it.

### **7.12. Use of formula modifiers in cells containing a BizSuperFunc**

Cells containing a BizSuperFunc and a modifier such as \*-1 calculate correctly but if a user opens the BizInsight Query with such a cell highlighted, the \*-1 will be included when inserted into a cell, though there is no indication it is provided in the BizInsight Query that this will happen.

### **7.13. Use of data that contains blank cells**

Blank cells are considered a null value, not a zero. This should be kept in mind when building parameters that are looking for zero values. If you have a column of numbers that have empty cells, you will want to populate these cells with zeroes before building parameter levels that are looking for zeroes.

### **7.14. Lotus syntax**

The use of Lotus syntax in BizSuperFuncs is not supported

## 8. BizInsight Desktop Edition – Best Practices

### 8.1. Using selected Excel Data

The product requires that you have a unique name for your data. Utilize a unique *Range Name* or *Table Name* across all workbooks in a single Excel session.

The product works best when you do not alter the *Worksheet Name*, *Range Name*, or *Table Name* used when selecting the data (Select Data option). However, if you decide to change the *Worksheet Name*, *Range Name*, or *Table Name*, the easiest way to make sure your data is updated successfully is to add the data again using the Select Data option on the ribbon.

If you decide to change the *Worksheet Name*, *Range Name*, or *Table Name* and do not re-add the data using the Select Data option, here are the exceptions to data synchronization:

- Renaming a *Table Name* or *Range Name* will cause the Cell Address to be used in place of the original name. If the renamed *Table Name* or *Range Name* is resized on refresh, the data will not be available in BizInsight.
- Renaming a *Worksheet Name* and then setting focus to another *Worksheet* will allow BizInsight to locate the renamed *Worksheet*. However, if you fail to set focus to another *Worksheet* after renaming the *Worksheet*, updated data will not be available in BizInsight.

Re-naming a *Workbook* will not cause data synchronization failures.

### 8.2. Use of Named Ranges or cell ranges vs. Tables when selecting data

Selecting Excel tables for use (as opposed to a range of cells or a named range) is the best practice. With tables, deleting a row or column from a table that has been selected with the Select Data button will update the selection of data seen by the product. This feature is not supported with cell ranges and only partially supported with the use of named ranges (for example, adding rows or columns to the outer edge of a named range is not supported)